



## John Gardner & Associates

Suite 4 175 Boronia Rd. Boronia 3155

Melbourne Australia

Phone +61 3 9739 8066

Fax +61 3 9739 8077

Email [jga@johngardner.com.au](mailto:jga@johngardner.com.au)

Web [www.johngardner.com.au](http://www.johngardner.com.au)

### Profile

John Gardner & Associates is a progressive Structural & Civil Engineering design practice based in Melbourne, Australia specialising in the design and documentation of a wide range of Commercial, Industrial and Residential projects.

Since its commencement in 1985 the practice has grown into a professionally managed company with diverse professional staff trained to design engineering solutions which will satisfy the particular requirements of each project.



**John Gardner & Associates** has considerable professional experience and can offer a wide range of professional services including :

#### Commercial Projects

- New commercial buildings – retail, office, hotels
- Car parking stations
- Refurbishments and alterations of existing buildings
- Building recycling projects
- Repairs and maintenance reports

#### Residential Projects

- New residences of all size and type
- Alterations and renovations from small to large
- Multi unit developments
- Apartment buildings

#### Industrial projects

- Greenfield sites
- Multi unit developments
- Mezzanines
- Alterations and extensions
- OHS rectifications and modifications
- Repairs and maintenance reports
- Hardstands and loading bays
- Sign structures

#### Investigations and reports

- Due diligence reports
- Maintenance and rectification reports
- Independent inspection reports during construction
- Dilapidation reports
- Client representation



## John Gardner & Associates

Suite 4 175 Boronia Rd. Boronia 3155

Melbourne Australia

Phone +61 3 9739 8066

Fax +61 3 9739 8077

Email [jga@johngardner.com.au](mailto:jga@johngardner.com.au)

Web [www.johngardner.com.au](http://www.johngardner.com.au)

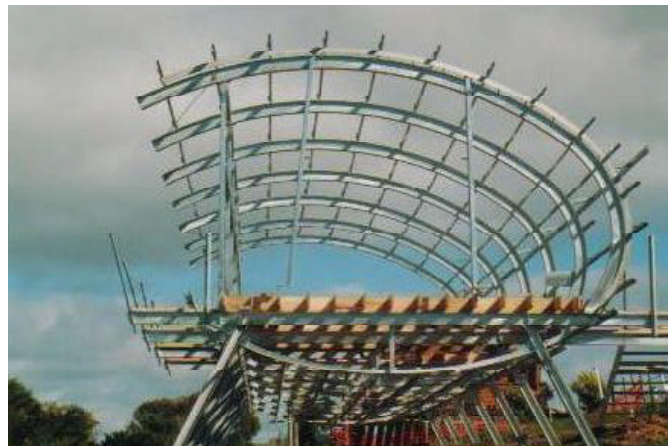
### Resources

The practice is fully equipped with the latest design and drafting software and hardware ensuring maximum efficiency and value for clients.

A comprehensive range of office hardware ensures trouble free and rapid handling of all Hardcopy and documents.

High speed ADSL 24 hour continuous Internet access ensures rapid file transfer and E-mail communications with all other members of the project team regardless of their geographic location.

Comprehensive Professional Indemnity Insurance assists with client project funding And due diligence procedures.





## John Gardner & Associates

Suite 4 175 Boronia Rd. Boronia 3155

Melbourne Australia

Phone +61 3 9739 8066

Fax +61 3 9739 8077

Email [jga@johngardner.com.au](mailto:jga@johngardner.com.au)

Web [www.johngardner.com.au](http://www.johngardner.com.au)

### Recent Projects

#### Commercial

Radio Station 4 BU	New Building	\$ 2 million
Land Earth Station	Satellite Receiver station	\$ 3 million
Joels Auction Rooms	Building Recycle	\$ 2 million
Nutrimetics Head Office	New Office Warehouse	\$ 5 million
Forum Theatre	Renovations	\$ 2 million

#### Recreational Clubs

Victoria Golf Club	Renovations	\$ 5 million
Sandringham Yacht Club	Renovations	\$ 1 million
Surf Life Saving Club Vic.New	Headquarters	\$ 5 million

#### Hotel and Leisure

Slipway Holiday Villas Retail,	Residential and Marina	\$ 4 million
Royal Oak Hotel	Alterations	\$ 1 million
Manningham Club	Alterations	\$ 1.5 million
Metro Night Club	Building Recycle	\$ 2 million
South Side Six Hotel	Alterations	\$ 2 million

#### Multi Unit Residential

Kings Apartments	New 9 Level Apartment Building	\$ 9 million
Byfas Apartments	4 Level Building Recycle	\$ 8 million
Brighton Apartments	2 Level & Basement	\$ 4 million
Elwood Apartments	2 Level & Basement	\$ 4 million
Burwood Terrace	Retirement Village	\$ 10 million
Glencor Gardens	Multi Unit subdivision	\$ 1 million
Kings St. Apartments	4 Levels Building Recycle	\$ 2 million
Bedillia Apartments	4 Level & Basement	\$ 5 million

#### Industrial

Rolfe Transport	12 acres site civil upgrade	\$ 1.5 million
Tillings Timber	Site Civil upgrade	\$ 1 million
ICI Kemrez Plant	Site Civil upgrade	\$ 1 million
CSR	Product Display Village	\$ 1 million

#### Residential

Numerous alterations and renovations of all size and budget.	\$ 50 K to \$ 2 million
Many new basement residences and new homes	\$ 1 to 5 million

#### Government and Institutional

Laurimar Community Centre	\$ 500 K
EPU Residential Development	\$ 1.5 million
Kilvington Girls Grammar School	\$ 500 K